

UKARIA
Cultural Centre

CONCERT SEATING CAPACITY AND AREAS

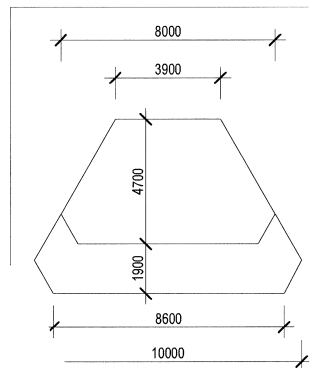
SEATING TOTAL 218

MAIN AREA - LOWER LEVEL 137

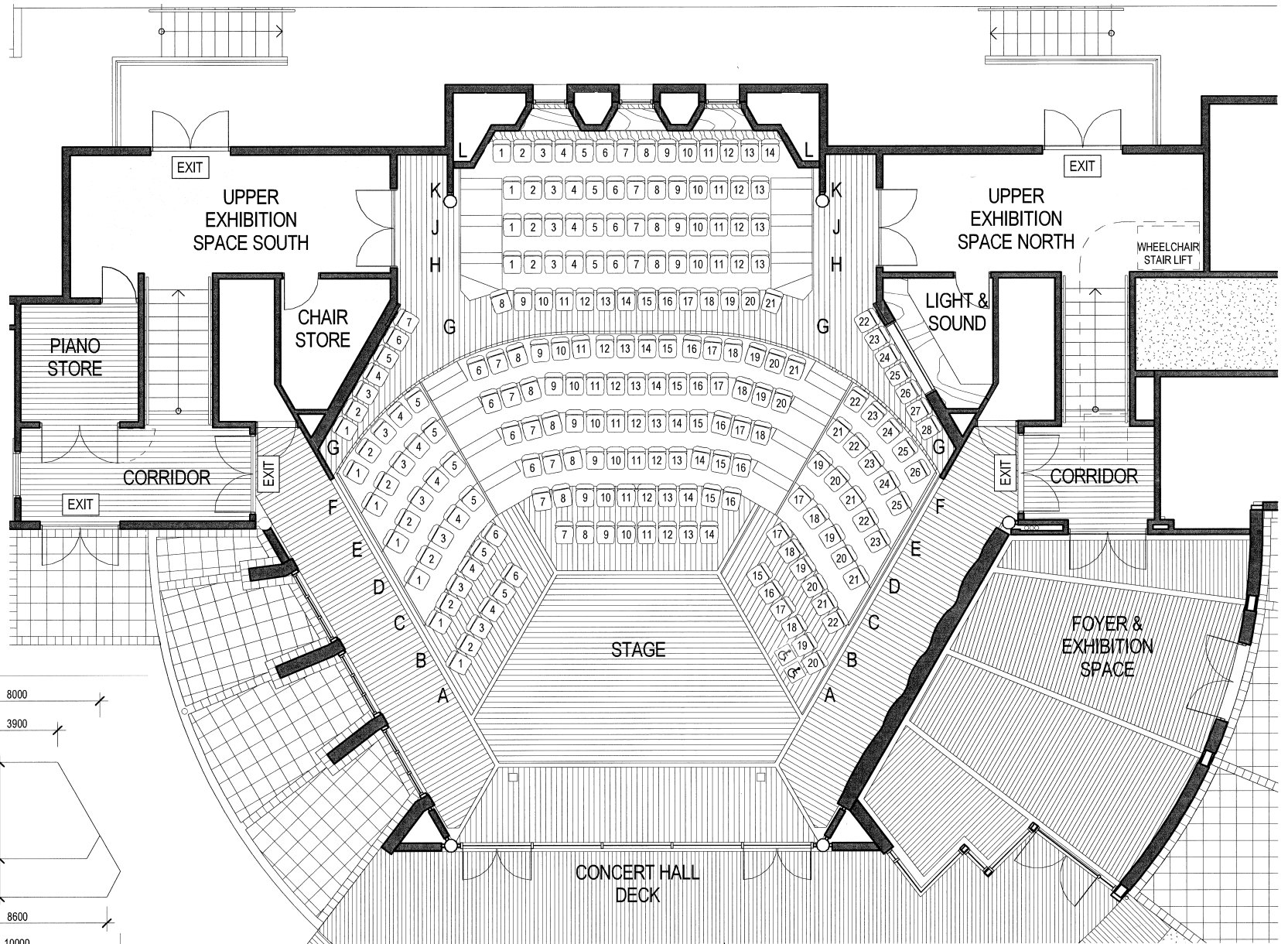
- ROW A 20
- ROW B 22
- ROW C 21
- ROW D 23
- ROW E 25
- ROW F 26

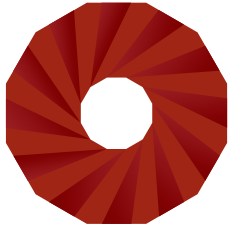
UPPER LEVEL 81

- ROW G 28
- ROW H 13
- ROW J 13
- ROW K 13
- ROW L 14



STAGE DIMENSIONS





UKARIA

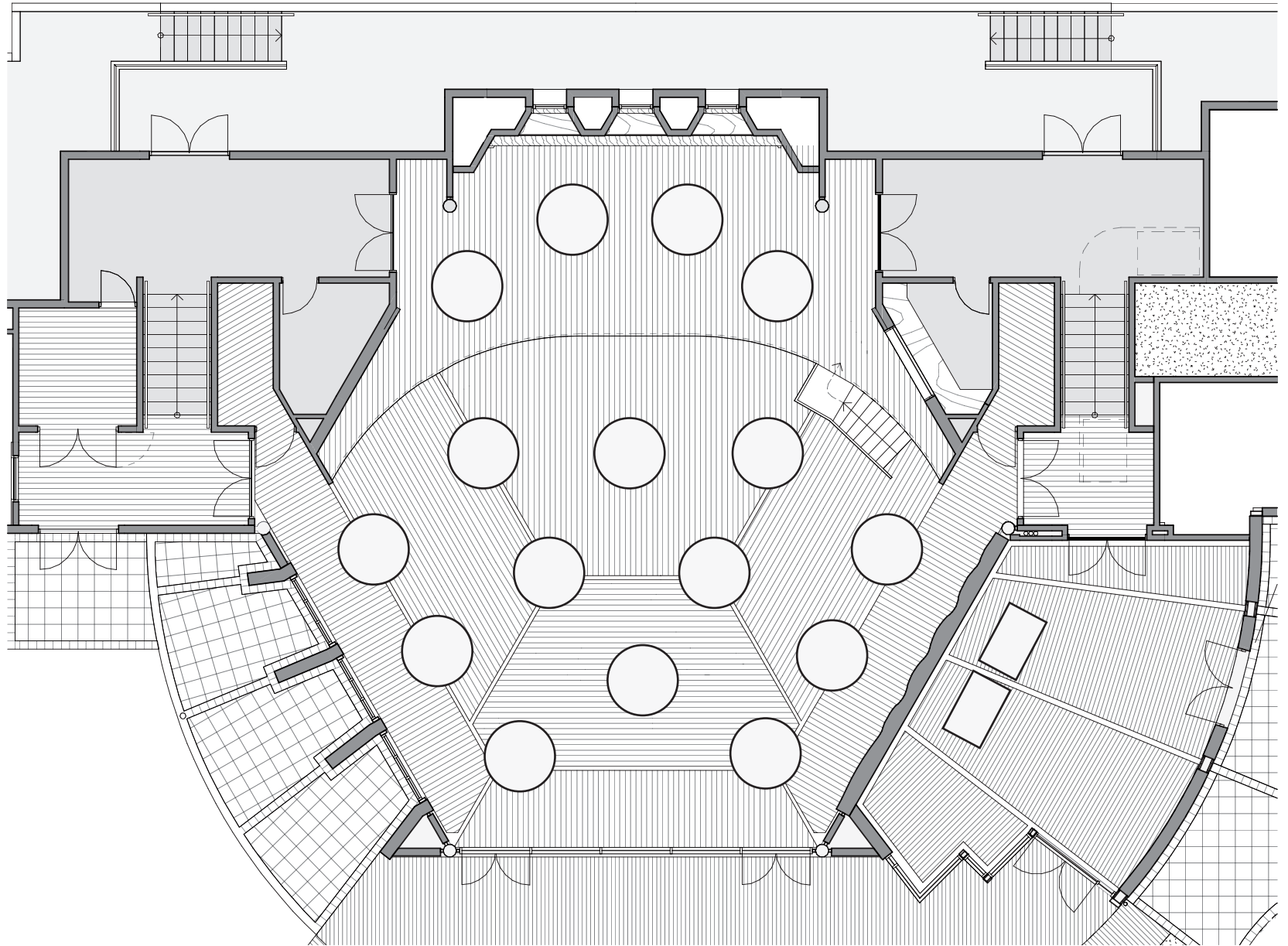
Cultural Centre

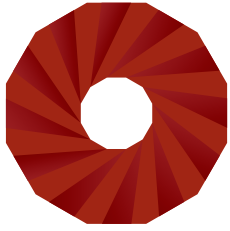
TWO LEVELS OF FLAT FLOOR SET UP WITH ROUND DINING TABLES

BANQUET STYLE DINING
16 tables x 10 PAX | 160 guests

CONFERENCE STYLE
16 tables x 8 PAX | 128 guests

Using 1800mm round tables.





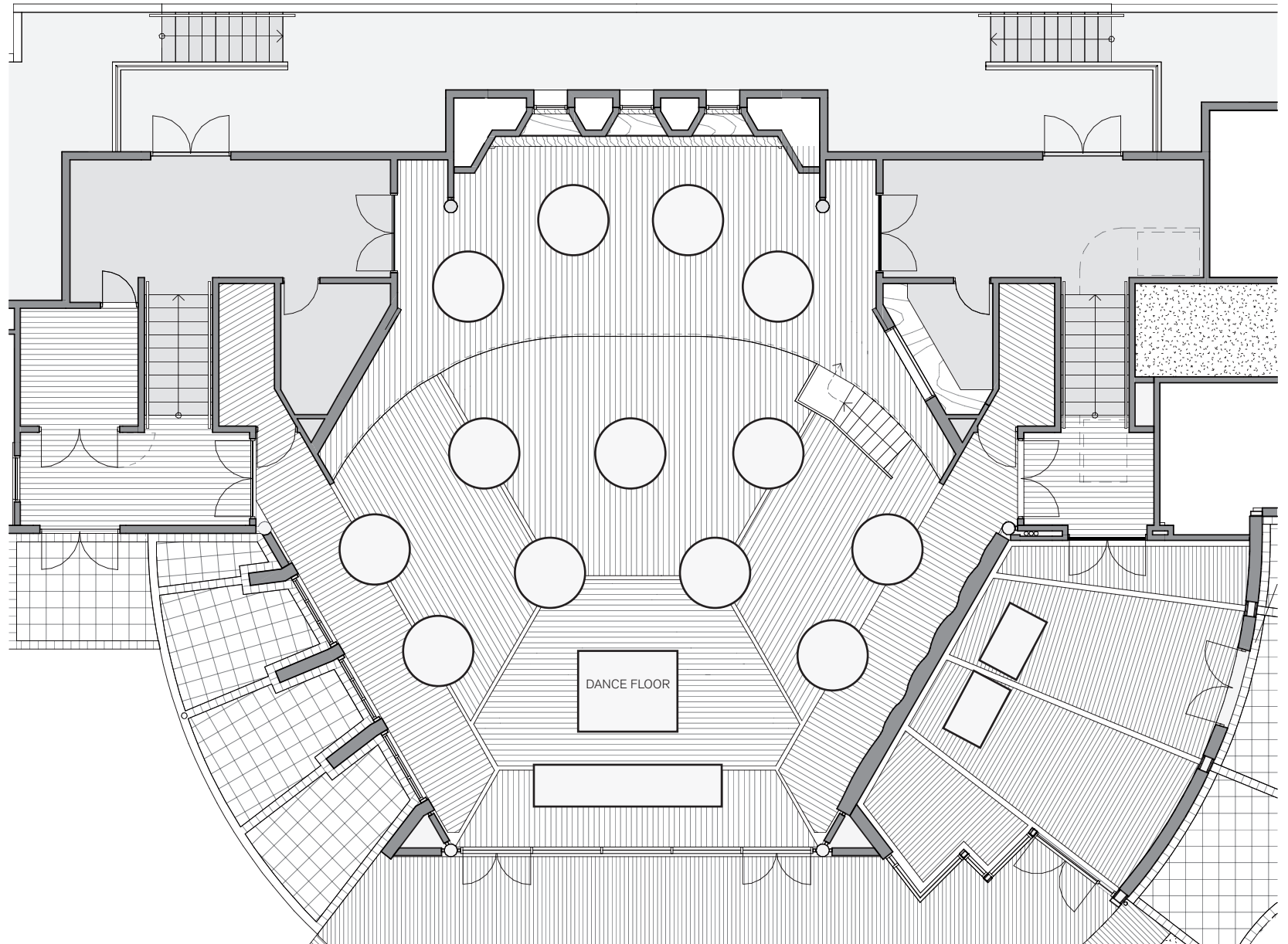
UKARIA
Cultural Centre

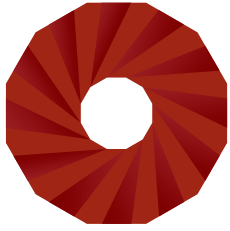
WEDDING

TWO LEVELS OF FLAT
FLOOR SET UP WITH
ROUND DINING TABLES
AND HEAD TABLE FOR
BRIDAL PARTY

13 TABLES x 10 PAX | 130 guests

HEAD TABLE | 10 guests





UKARIA
Cultural Centre

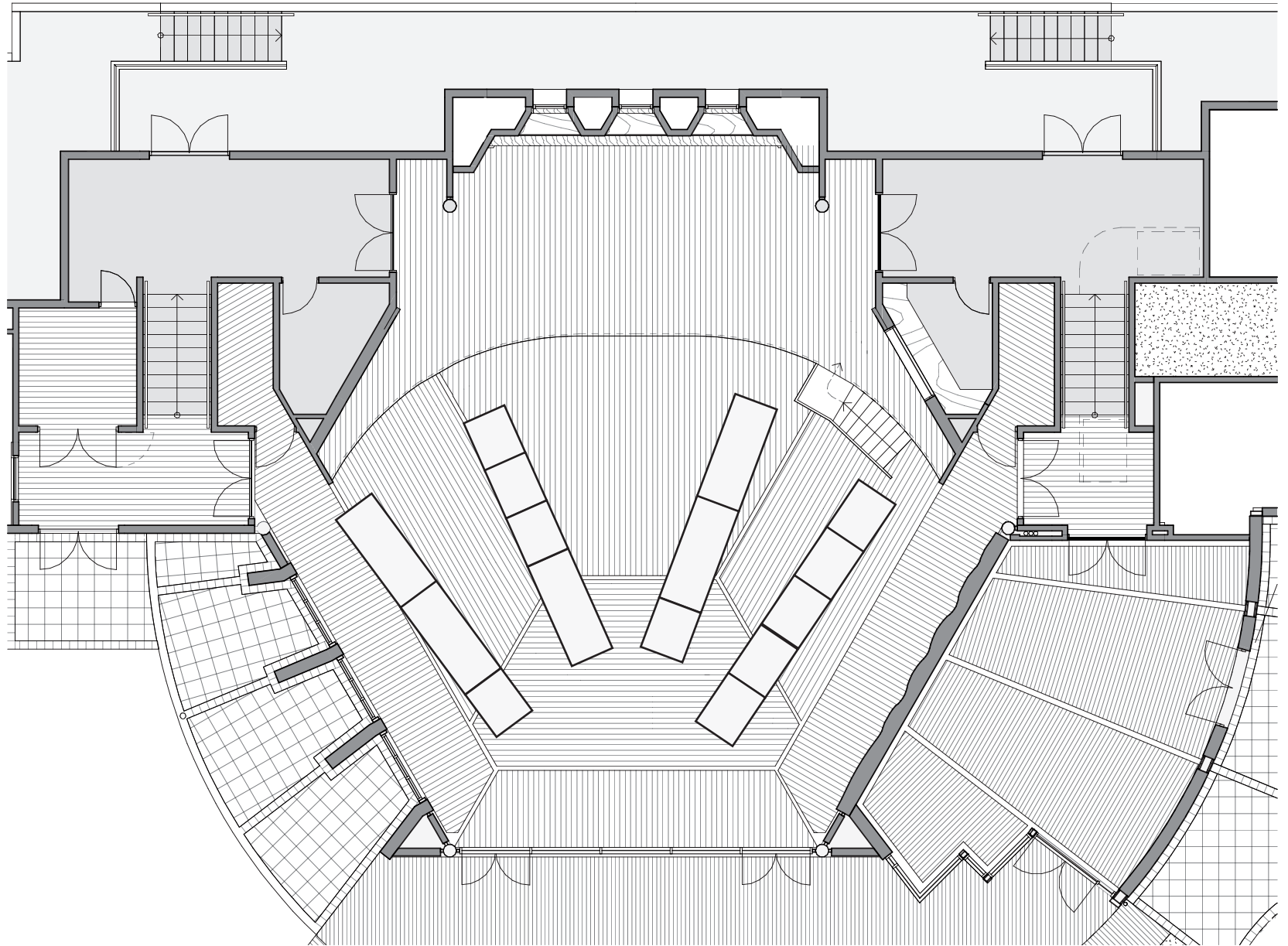
**BANQUET SET UP
IN CONCERT HALL**

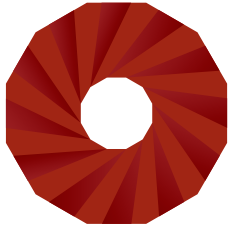
80 Guests total

2 long tables | 44 Guests

2 long tables | 18 Guests

Note: if dance floor required,
capacity decreases



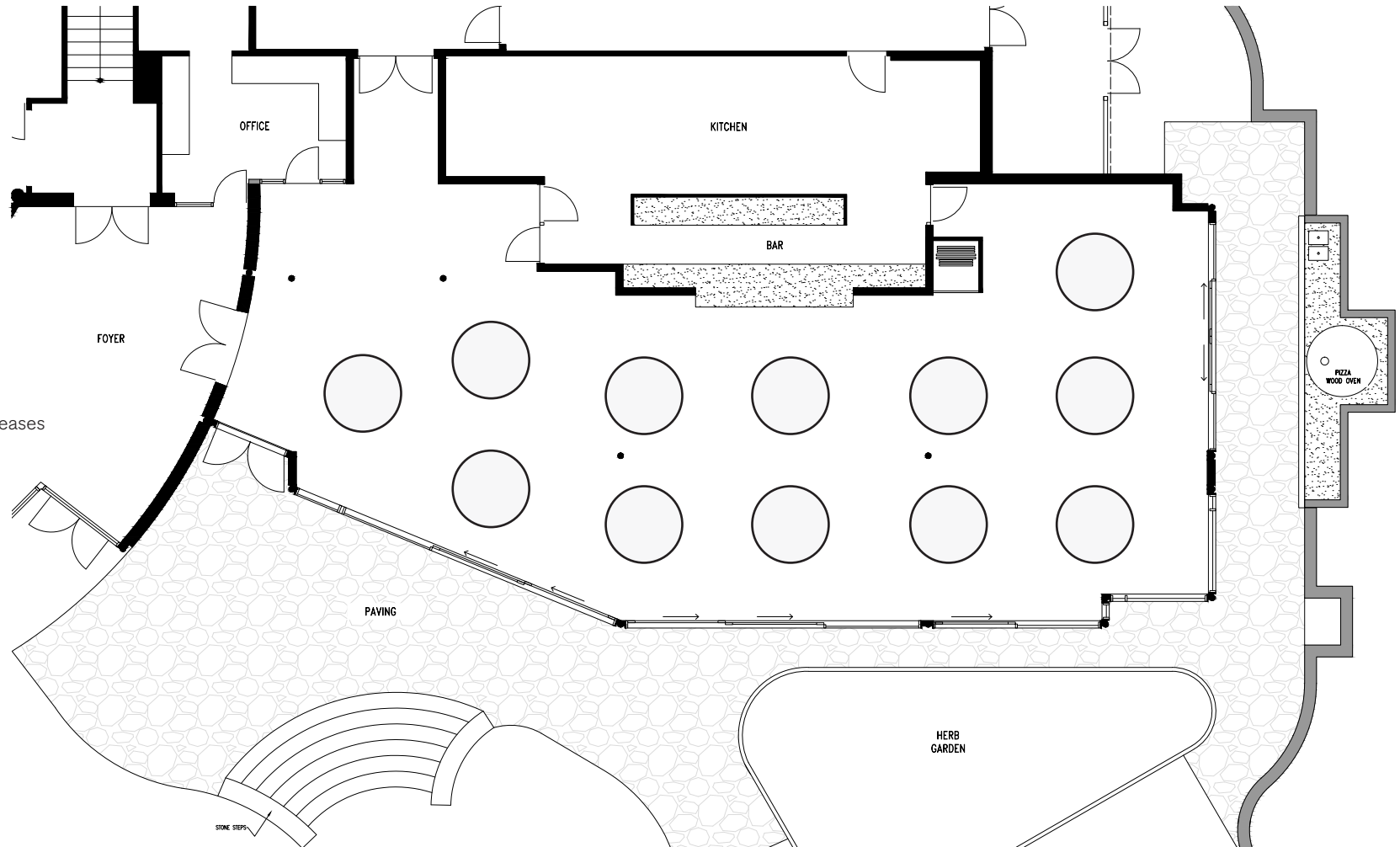


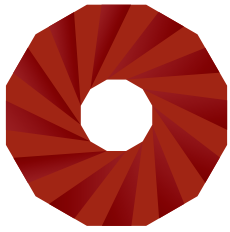
UKARIA
Cultural Centre

GARDEN TERRACE
DINING WITH ROUND
DINING TABLES.

12 Tables x 10 PAX | 120 guests

Note: if dance floor required, capacity decreases





UKARIA
Cultural Centre

GARDEN TERRACE DINING LONG TABLE SET UP

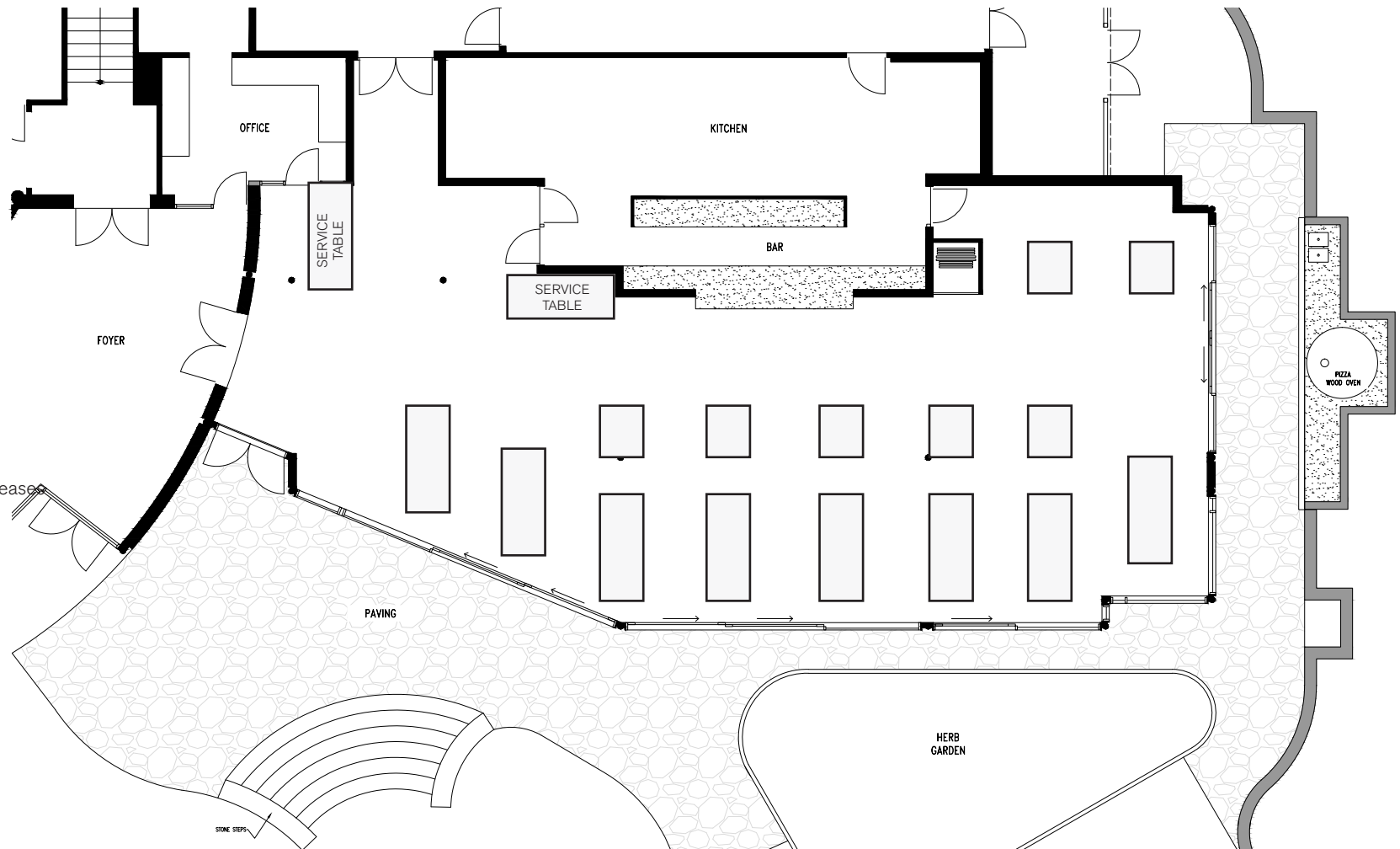
112 Guests total

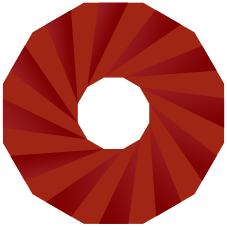
8 long tables x 10 PAX | 80 Guests

5 square tables x 4 PAX | 20 Guests

2 square tables x 6 PAX | 12 Guests

Note: if dance floor required, capacity decreases





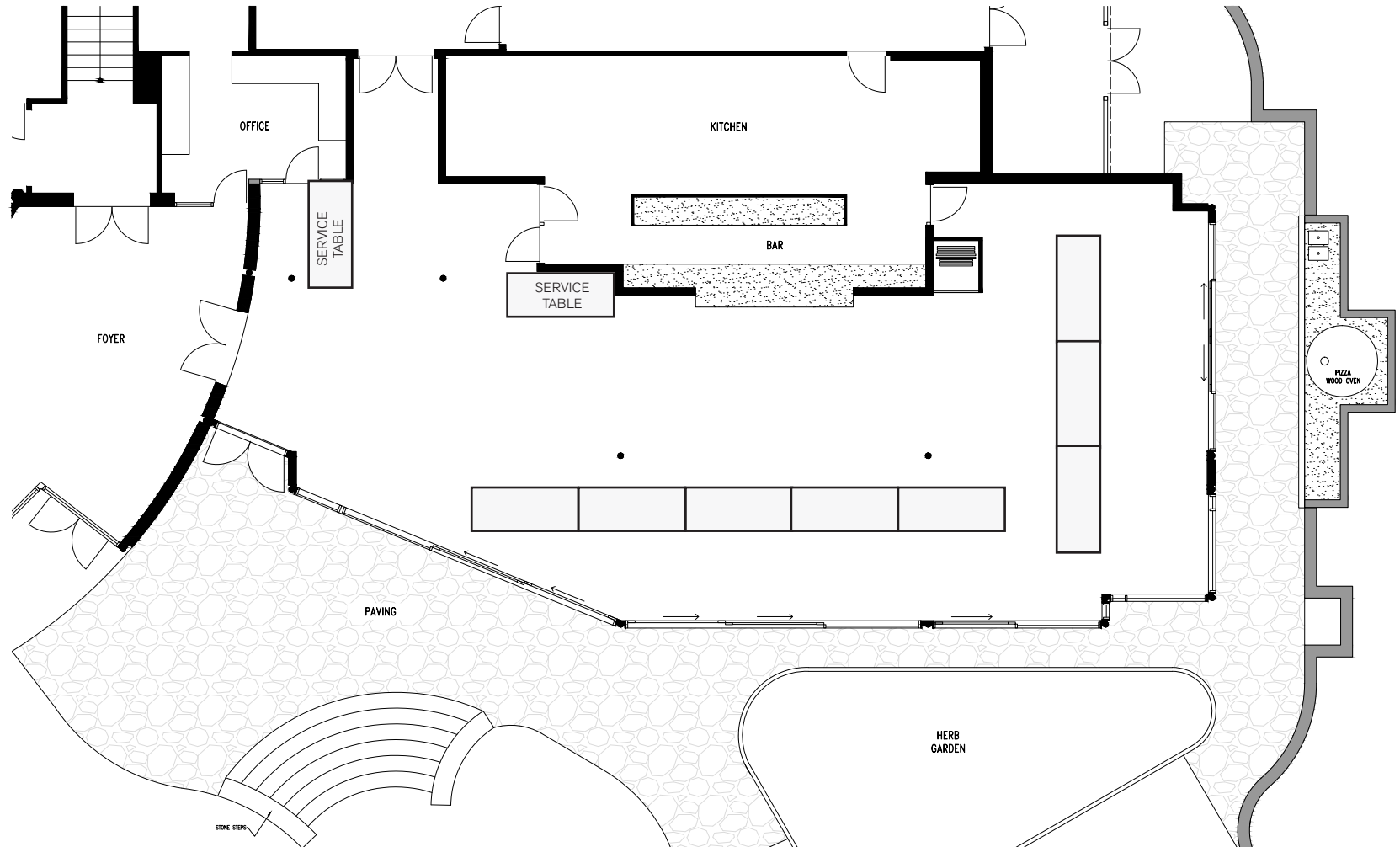
UKARIA
Cultural Centre

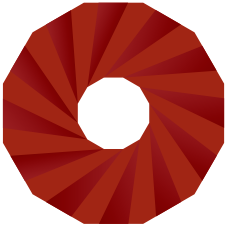
**GARDEN TERRACE
DINING L SHAPE SET UP**

68 Guests total

1 long table | 26 Guests

1 long table | 42 Guests

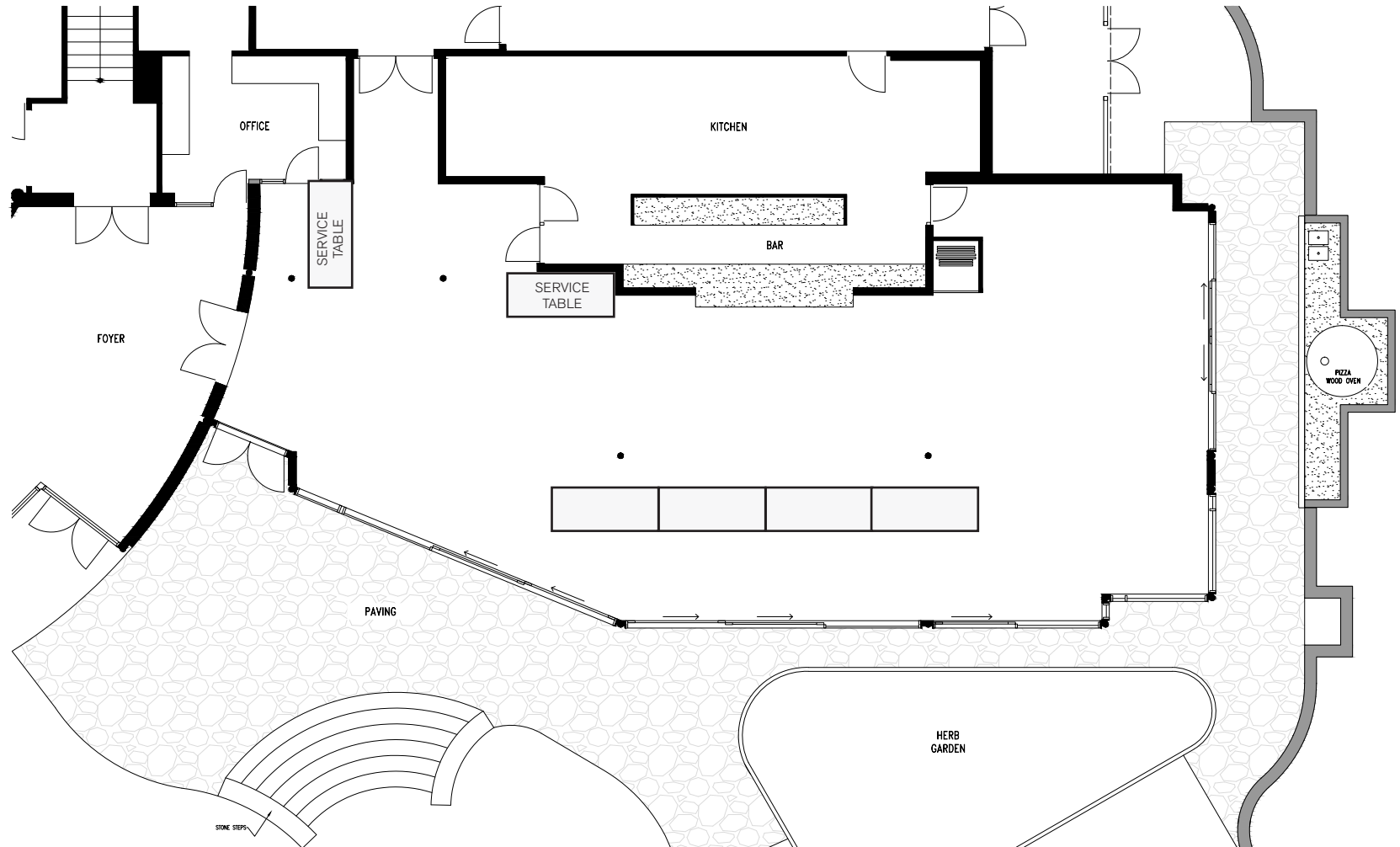


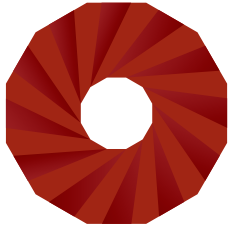


UKARIA
Cultural Centre

GARDEN TERRACE
ONE LONG TABLE
BANQUET STYLE

34 Guests total

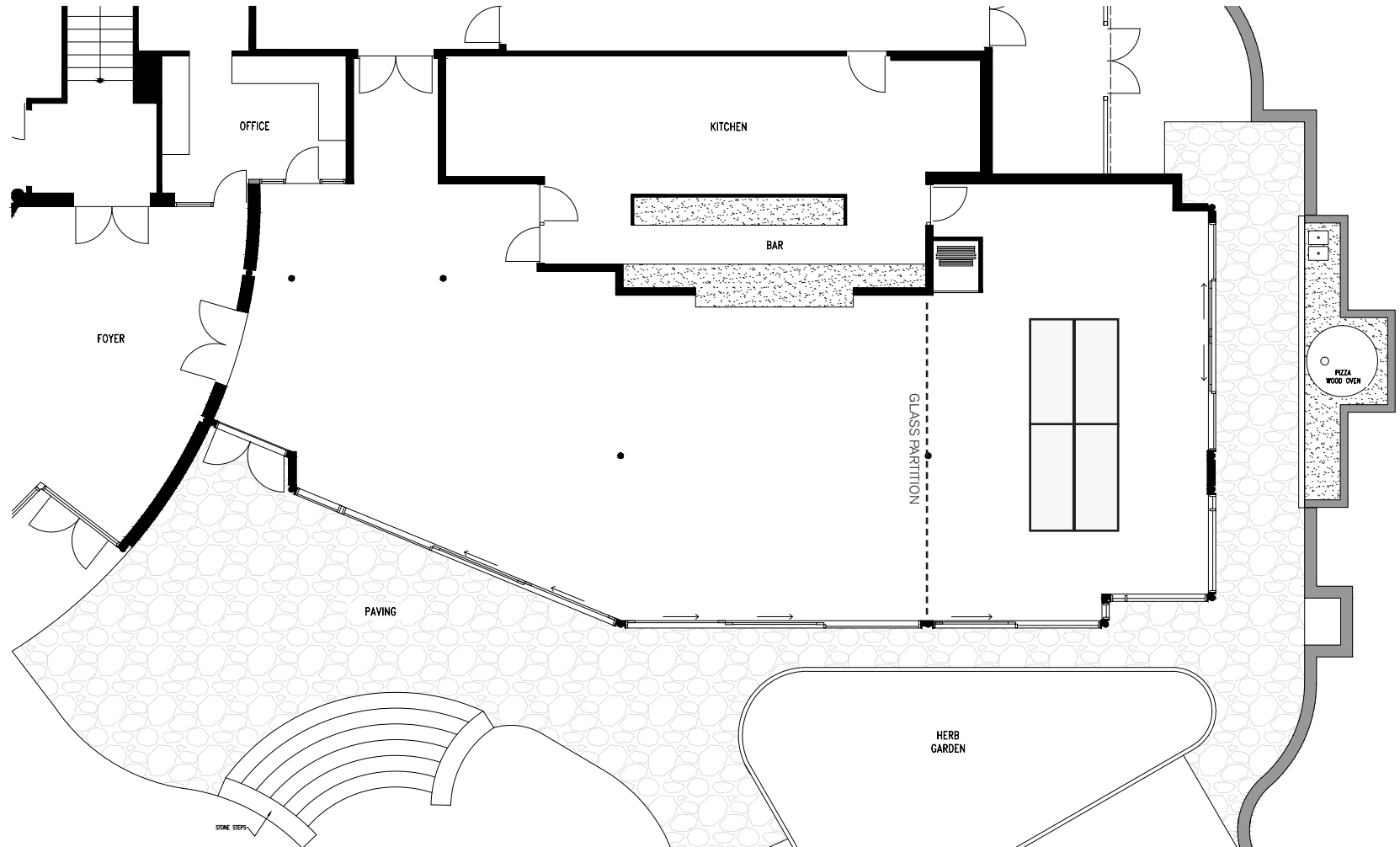


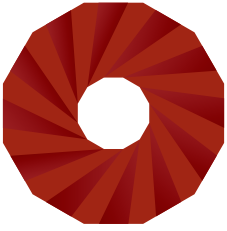


UKARIA
Cultural Centre

GARDEN TERRACE
NORTHERN AREA
BOARDROOM SET UP

20 Guests total





UKARIA
Cultural Centre

GARDEN TERRACE
NORTHERN AREA
BOARDROOM SET UP

4 round tables x 10 PAX | **40 Guests total**

